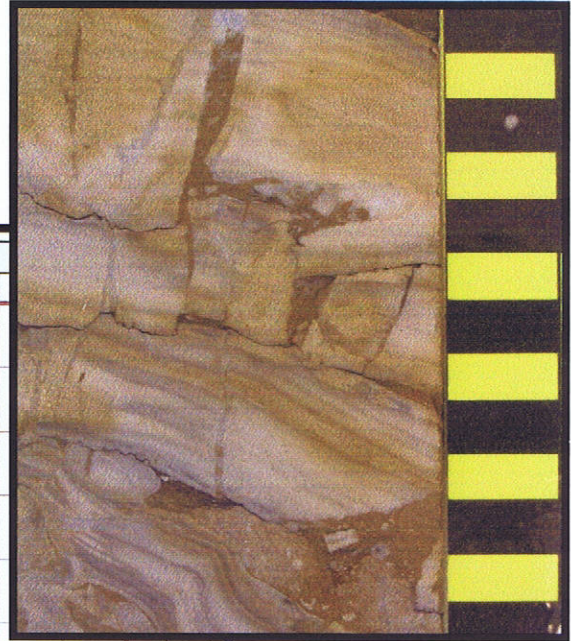
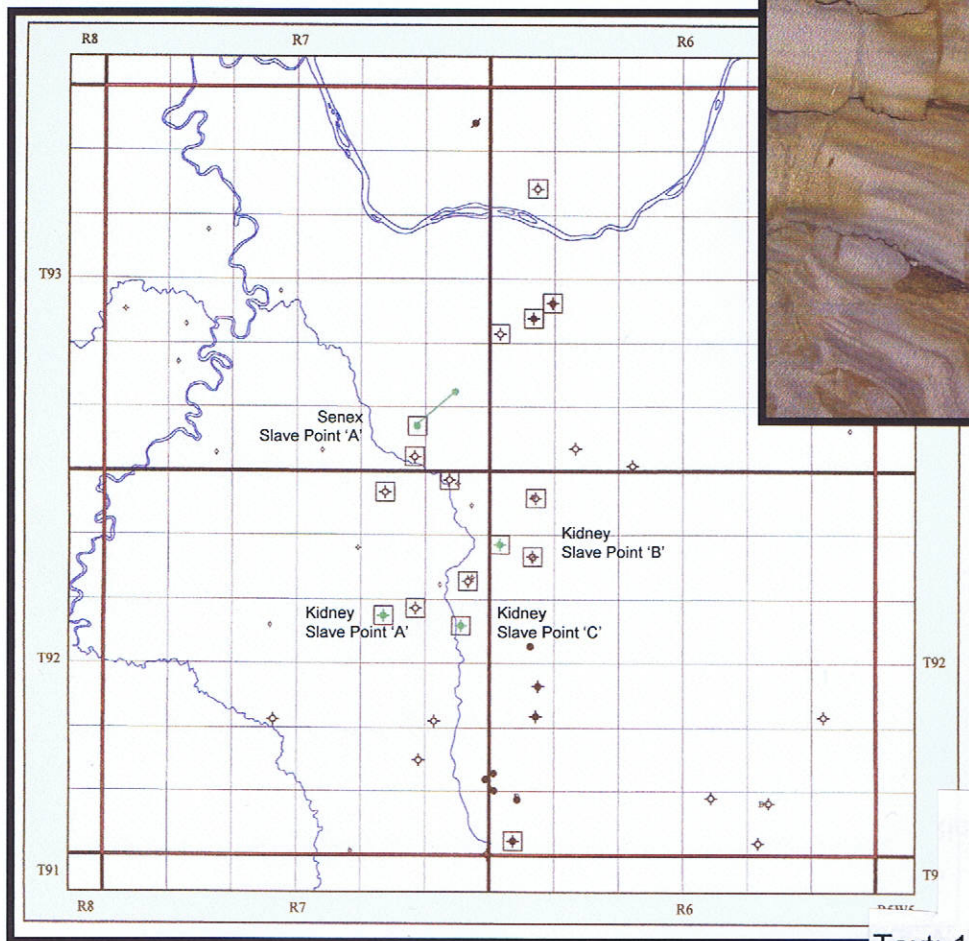


CORE STUDY OF THE SLAVE POINT FORMATION SENEX AREA, N.W. ALBERTA



Completed October, 2004

Text: 13 pages, 4 Figures, 9 Plates, 1 Table

38 Wells, 12 Stratigraphic Picks

18 Cored Well Descriptions (~430 metres)

3 Stratigraphic Cross Sections

5 Maps (1:50,000)

Digital Stratigraphic Data

SCG

STOAKES CONSULTING GROUP LTD.