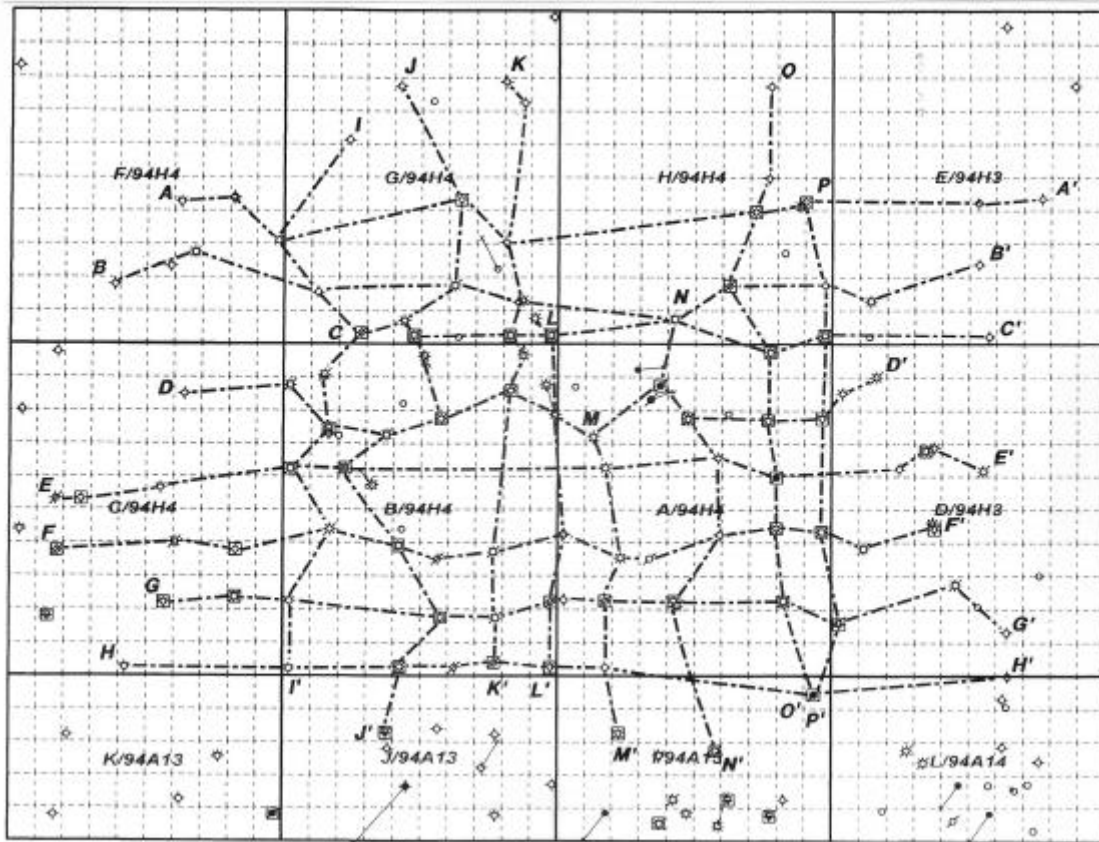
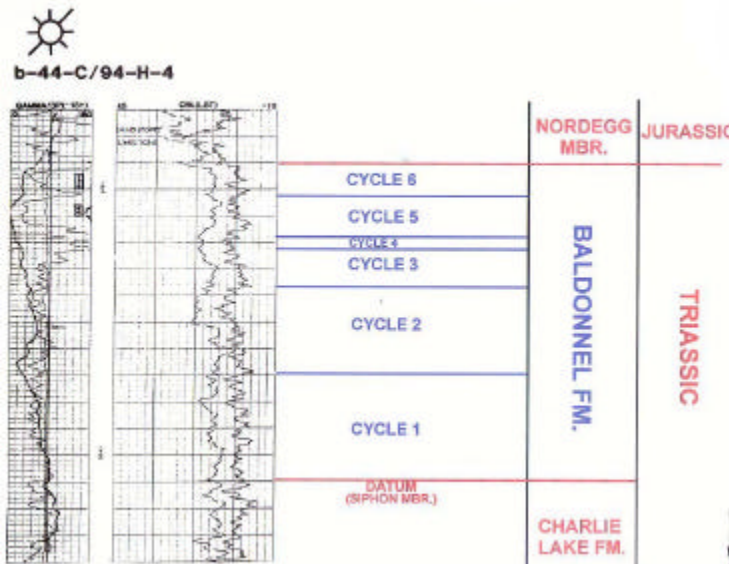


GEOLOGIC RESERVOIR STUDY OF THE **BALDONNEL FORMATION** NIG CREEK FIELD, N.E. B.C.



Completed: October 2002



Fully documented study including:

- Text (26 pages) with 16 figures, 10 plates and 3 tables.
- 172 study wells with digital database of stratigraphic picks.
- 50 core descriptions.
- 16 stratigraphic cross sections.
- 6 isopach and facies maps.
- 2 structure maps.